

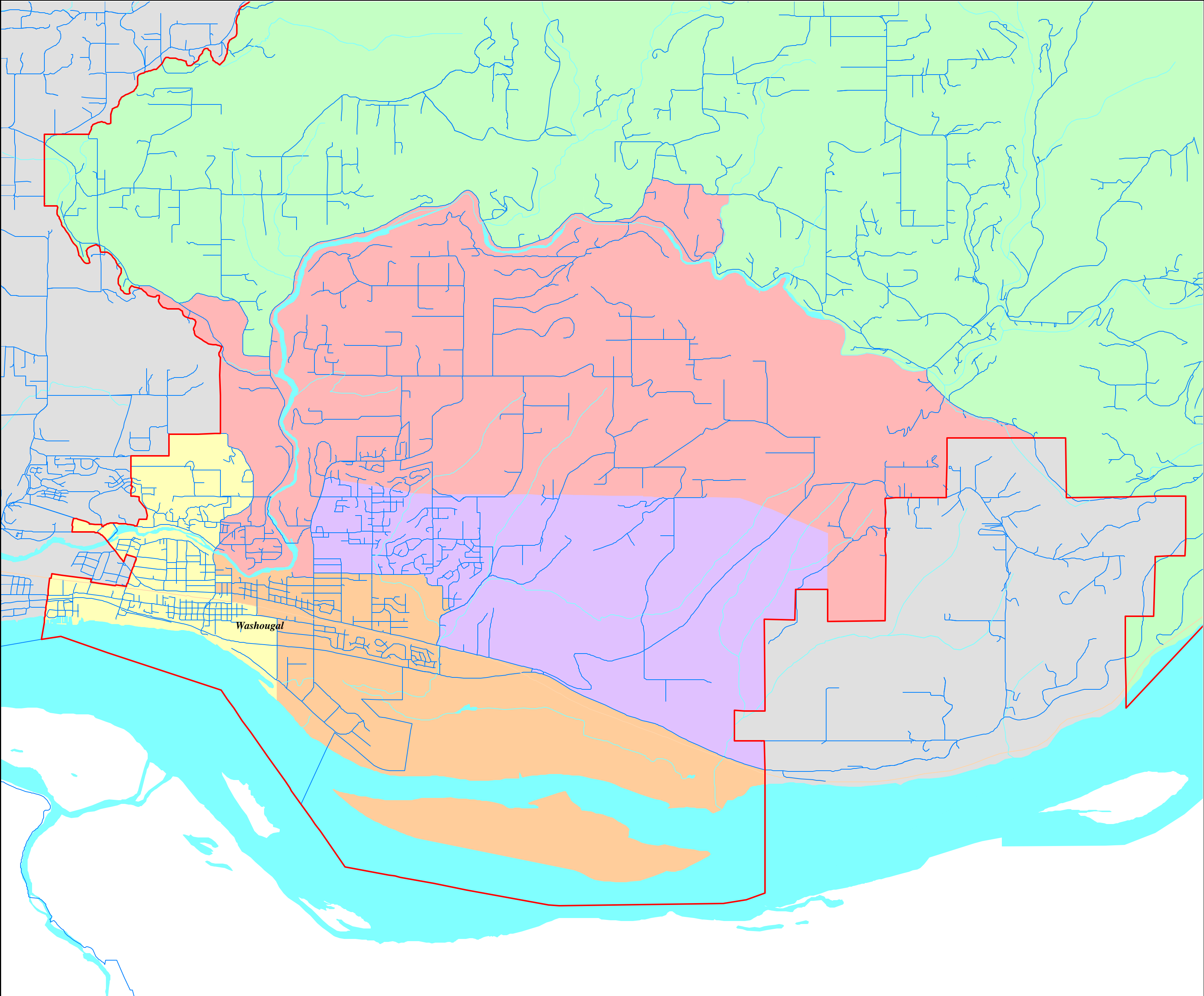
Washougal School District

Proposed Board of Director Districts based on Census 2010 Geography

Proposed Board Districts as Approximated Using Census 2010 Geography

- 1st District
- 2nd District
- 3rd District
- 4th District
- 5th District

District Outline



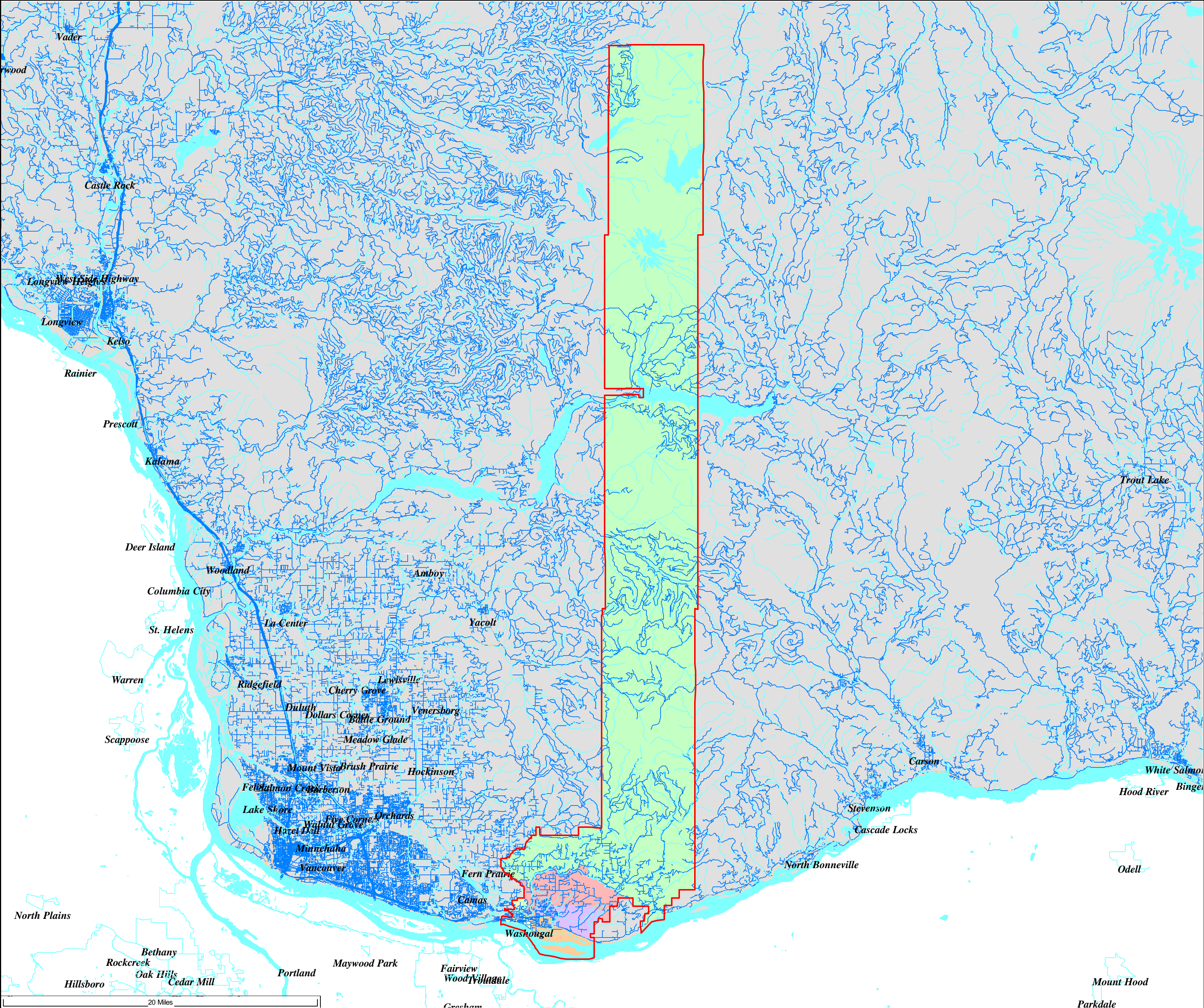
Washougal School District

Proposed Board of Director Districts based on Census 2010 Geography

Proposed Board Districts as Approximated Using Census 2010 Geography

- 1st District
- 2nd District
- 3rd District
- 4th District
- 5th District

District Outline



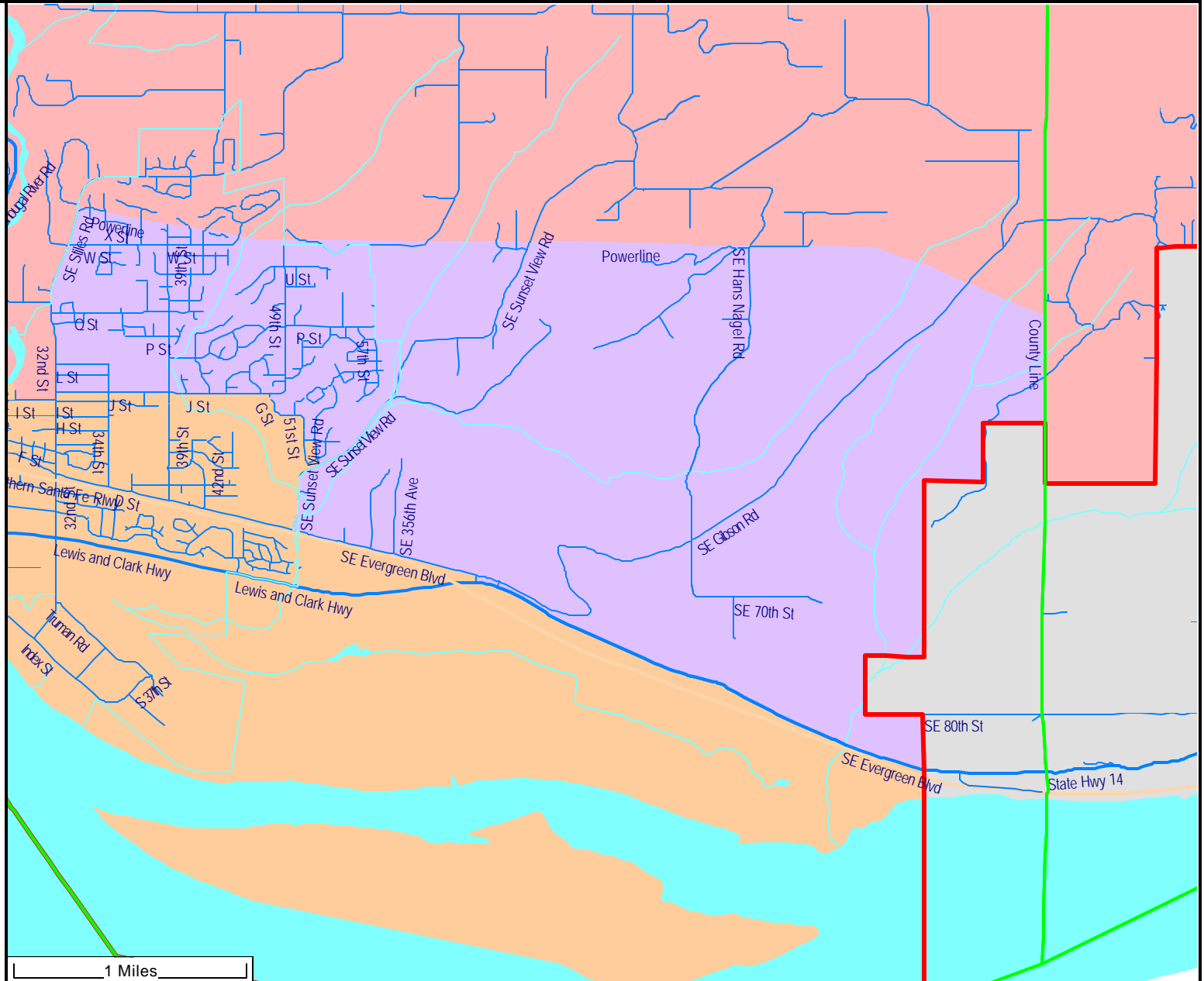
Proposed Board of Director Districts based on Census 2010 Geography

2nd District

3rd District

4th District

5th District



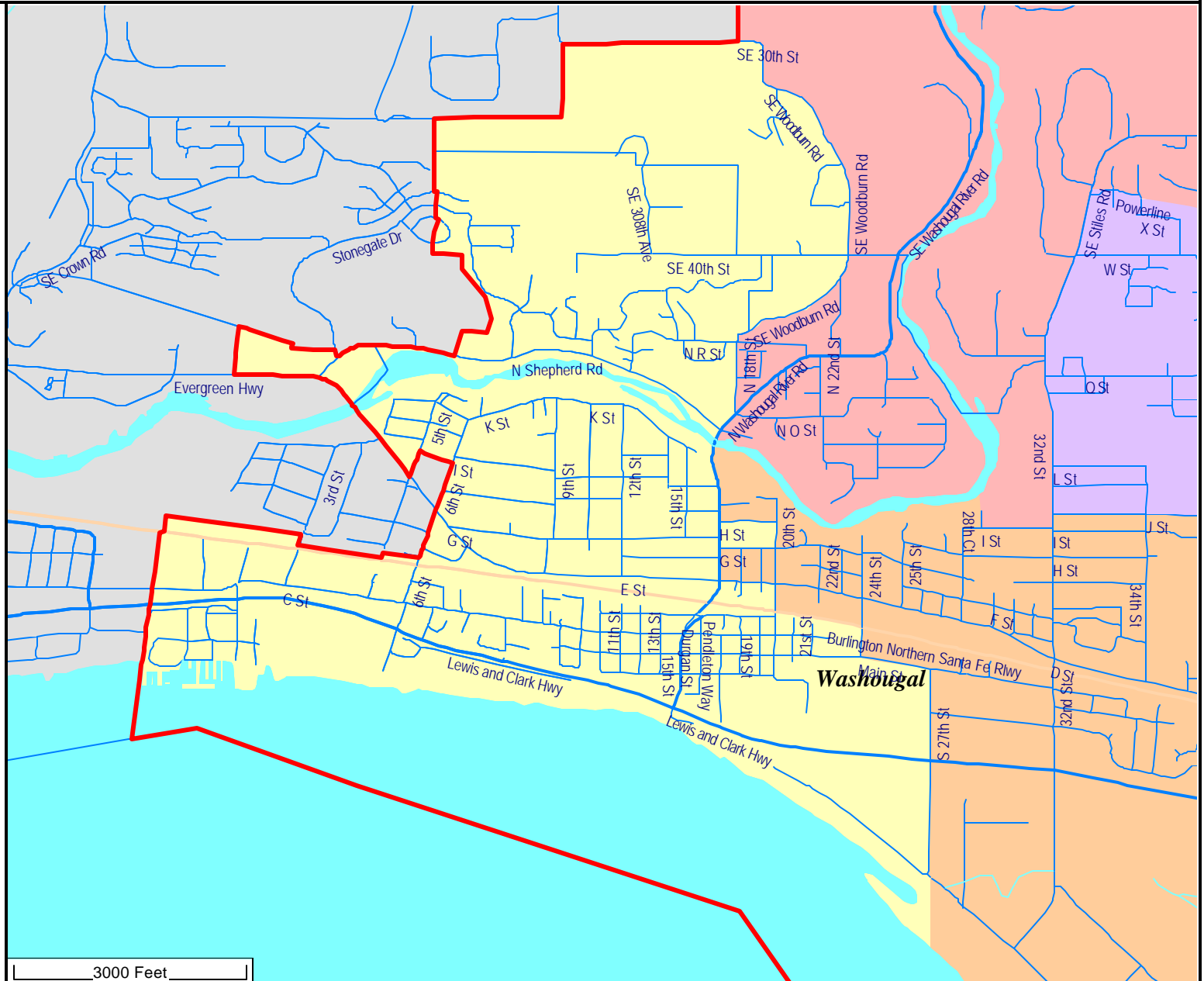
Proposed Board of Director Districts based on Census 2010 Geography

1st District

3rd District

4th District

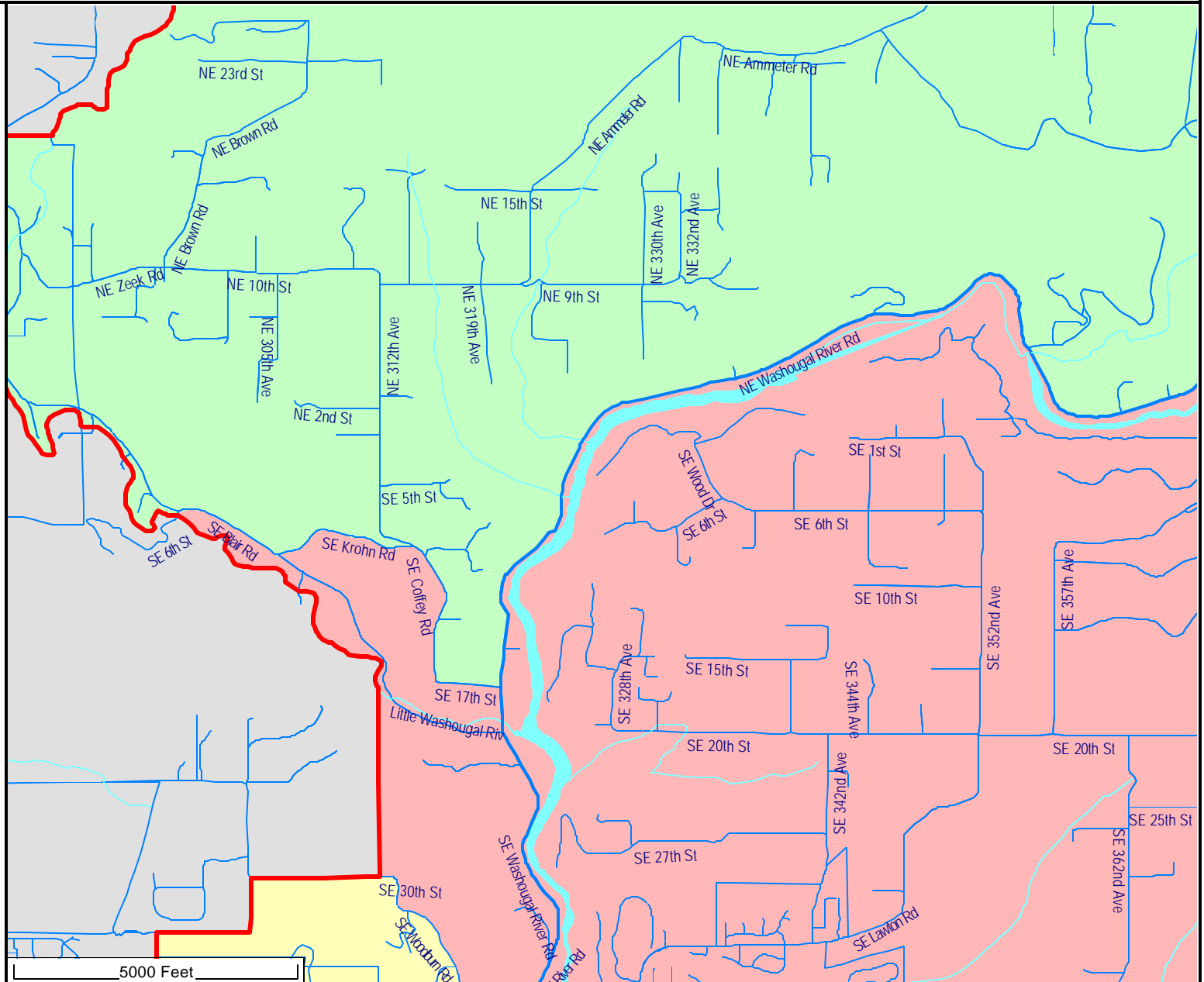
5th District



Proposed Board of Director Districts based on Census 2010 Geography

The figure displays four horizontal bar charts, each representing a different district. Each bar is divided into segments of different colors, representing the distribution of political party affiliations. A black dot is placed on each bar to indicate the majority party.

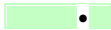
- 1st District:** The bar is divided into three segments: a large yellow segment on the left, a small white segment in the middle, and a small yellow segment on the right. The black dot is located in the yellow segment on the left.
- 2nd District:** The bar is divided into three segments: a large green segment on the left, a small white segment in the middle, and a small green segment on the right. The black dot is located in the green segment on the left.
- 4th District:** The bar is divided into three segments: a large purple segment on the left, a small white segment in the middle, and a small purple segment on the right. The black dot is located in the purple segment on the left.
- 5th District:** The bar is divided into three segments: a large red segment on the left, a small white segment in the middle, and a small red segment on the right. The black dot is located in the red segment on the left.



Washougal School District

Proposed Board of Director Districts based on Census 2010 Geography

Proposed Board Districts
as Approximated Using
Census 2010 Geography



2nd District

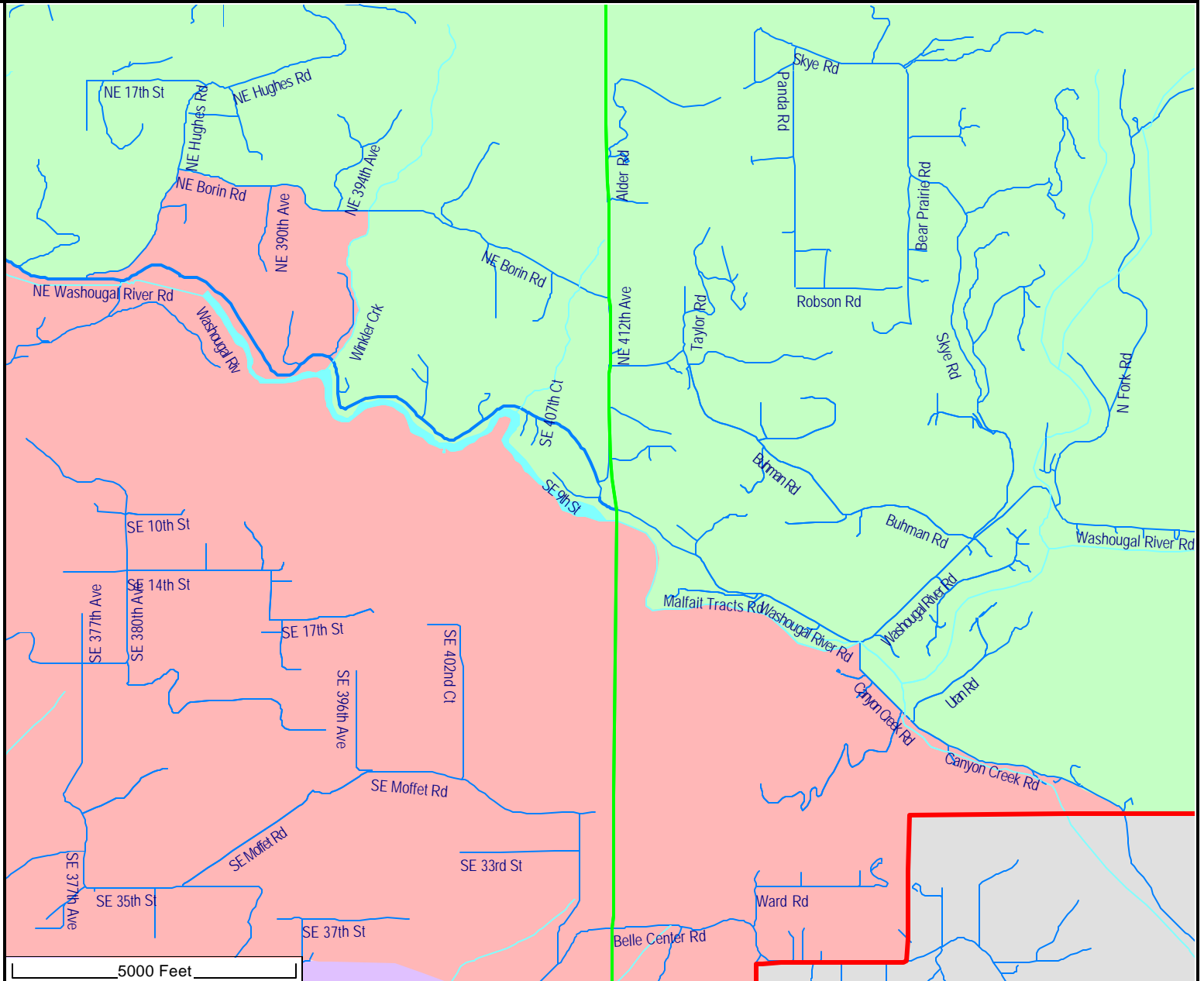


4th District



5th District

District
Outline



03/11/2011

Washougal School District **District Summary Report**

1

Director District Number	Ideal Population	Total Population	Deviation from Ideal	% Deviation from Ideal	White Population	Hispanic Origin (of any race)	Non White & Mixed
1st	3,834	3,831	-3	-0.08	3,474	234	357
2nd	3,834	3,843	9	0.23	3,622	110	221
3rd	3,834	3,803	-31	-0.81	3,481	236	322
4th	3,834	3,846	12	0.31	3,514	167	332
5th	3,834	3,845	11	0.29	3,574	119	271
Totals.....		<u>19,168</u>	<u>-2</u>		<u>17,665</u>	<u>866</u>	<u>1,503</u>

Washougal School District
Summary of Population by Race and Hispanic Origin

District Number	Total Population	Total Population by Race							Two or More Races	Hispanic Origin (of any race)
		Single Race								
		Total	White	Black African American	American Indian and Alaska Native	Asian	Native Hawaiian and Other Pacific Islander	Other Race	Total	
1st	3,831	3,677	3,474	28	45	45	3	82	154	234
2nd	3,843	3,745	3,622	12	39	38	3	31	98	110
3rd	3,803	3,660	3,481	9	46	38	5	81	143	236
4th	3,846	3,711	3,514	19	15	107	7	49	135	167
5th	3,845	3,733	3,574	19	31	56	6	47	112	119
Totals.....	19,168	18,526	17,665	87	176	284	24	290	642	866