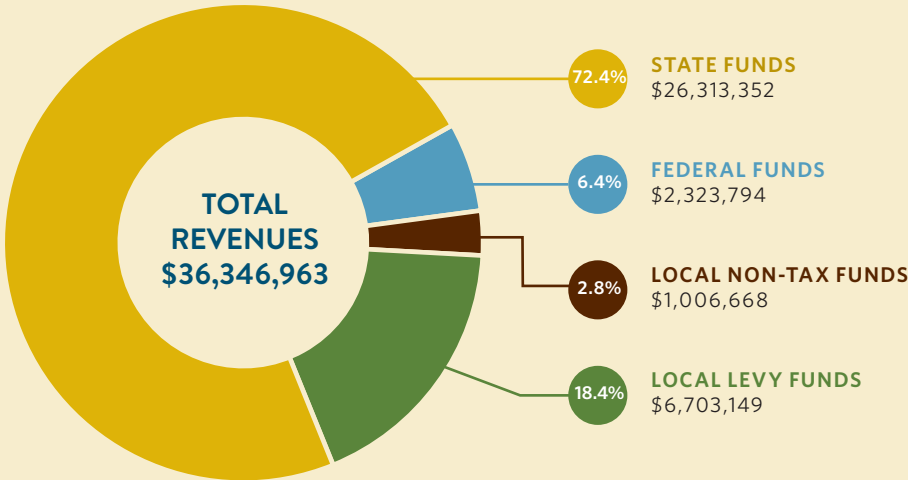


2017 Annual Report

REPORT PART 2 OF 2, PUBLISHED WINTER 2018

2016-17 REVENUES & EXPENDITURES

Our fiscal year begins September 1 and ends August 31.



State

Apportionment (FTE enrollment), State Levy Assistance, Transportation funds

Federal

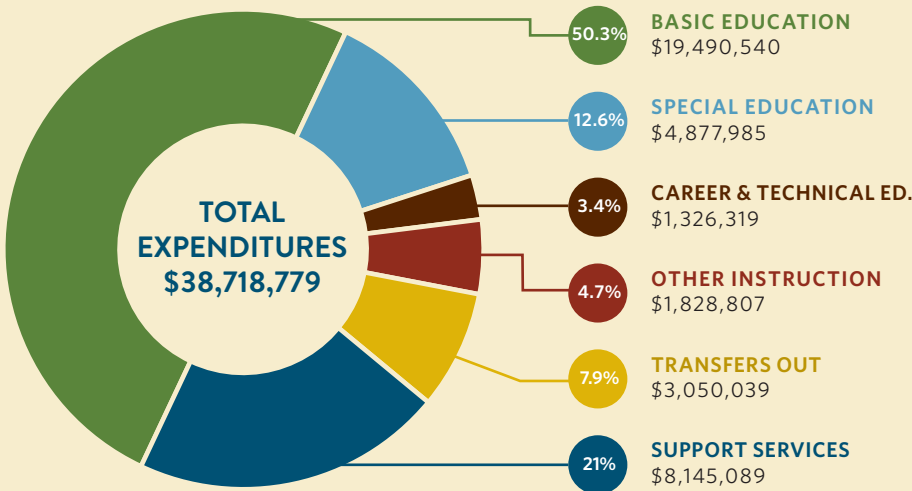
Special Education, Career & Technical Education, Title I, Title II, USDA Commodities

Local Non-Tax

Facility rentals, community education, donations, grants, library fines, e-rate funds, non-high collection, meal payments

Local Levies

Maintenance & Operations Levy



Basic Education

Covers most salaries & benefits, materials and professional development

Special Education

Used for educating students with special needs

Career & Technical Ed.

Middle and high school work- and college-readiness courses

Other Instruction

Title I, Learning Assistance, bilingual programs and Highly Capable program spending

Transfers Out

Support for one-time, long-range capital facilities planning

Support Services

Purchased services and other operational expenses

PURCHASED SERVICES
12.2%

TRANSFERS OUT
7.9%

SUPPLIES
5.5%

TRAVEL & CAPITAL OUTLAY - 1.9%

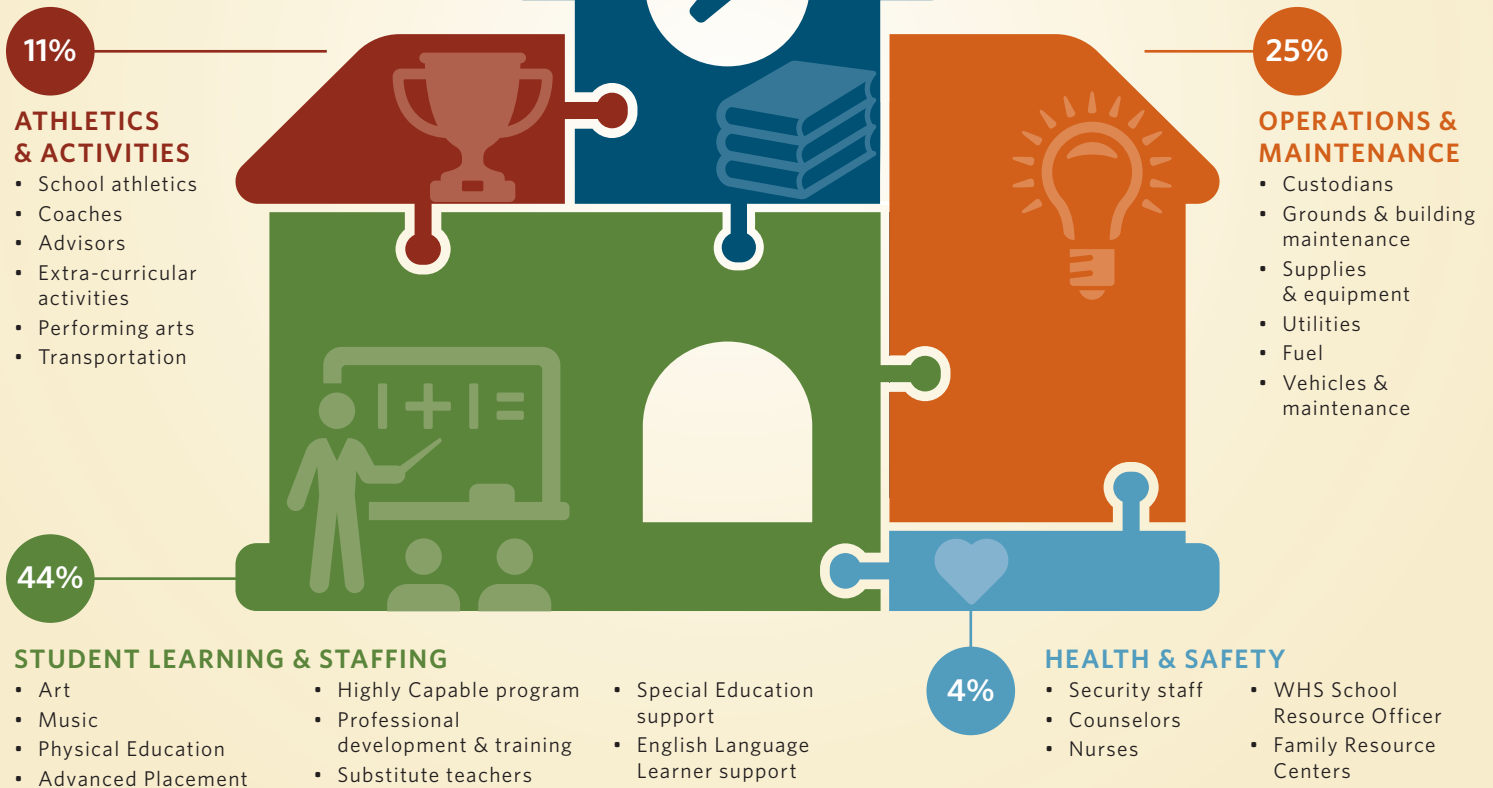
WHERE THE MONEY GOES

SALARIES & BENEFITS
72.5%

MAINTENANCE & OPERATIONS (M&O) LEVY

Washougal received over \$6.7 million in local M&O levy dollars in 2017.

This funding supports...



TECHNOLOGY LEVY

Our \$775,000 Tech Levy supports...

- The student 1:1 initiative
- Up-to-date computers and devices
- Classroom instructional technology
- Professional development and coaching
- Technology infrastructure
- Curriculum and software



WASHOUGAL SCHOOL DISTRICT

4855 Evergreen Way, Washougal, WA 98671
Tel: 360.954.3000 | Fax: 360.954.3099

www.washougal.k12.wa.us

NONDISCRIMINATION STATEMENT: Washougal School District does not discriminate on the basis of sex, race, creed, religion, color, national origin, age, honorably discharged veteran or military status, sexual orientation including gender expression or identity, the presence of any sensory, mental, or physical disability, or the use of a trained dog guide or service animal by a person with a disability in its programs and activities and provides equal access to the Boy Scouts and other designated youth groups. The following employees have been designated to handle questions and complaints of alleged discrimination: Bullying and Harassment Complaint Officer, Dr. Patricia Boles; 504 Compliance Officer, Dr. Rebecca von Duering; ADA and Title IX Compliance Officer, Marian Young.