

Washougal School District

EXECUTIVE TEAM ORGANIZATIONAL CHART 2021-2022

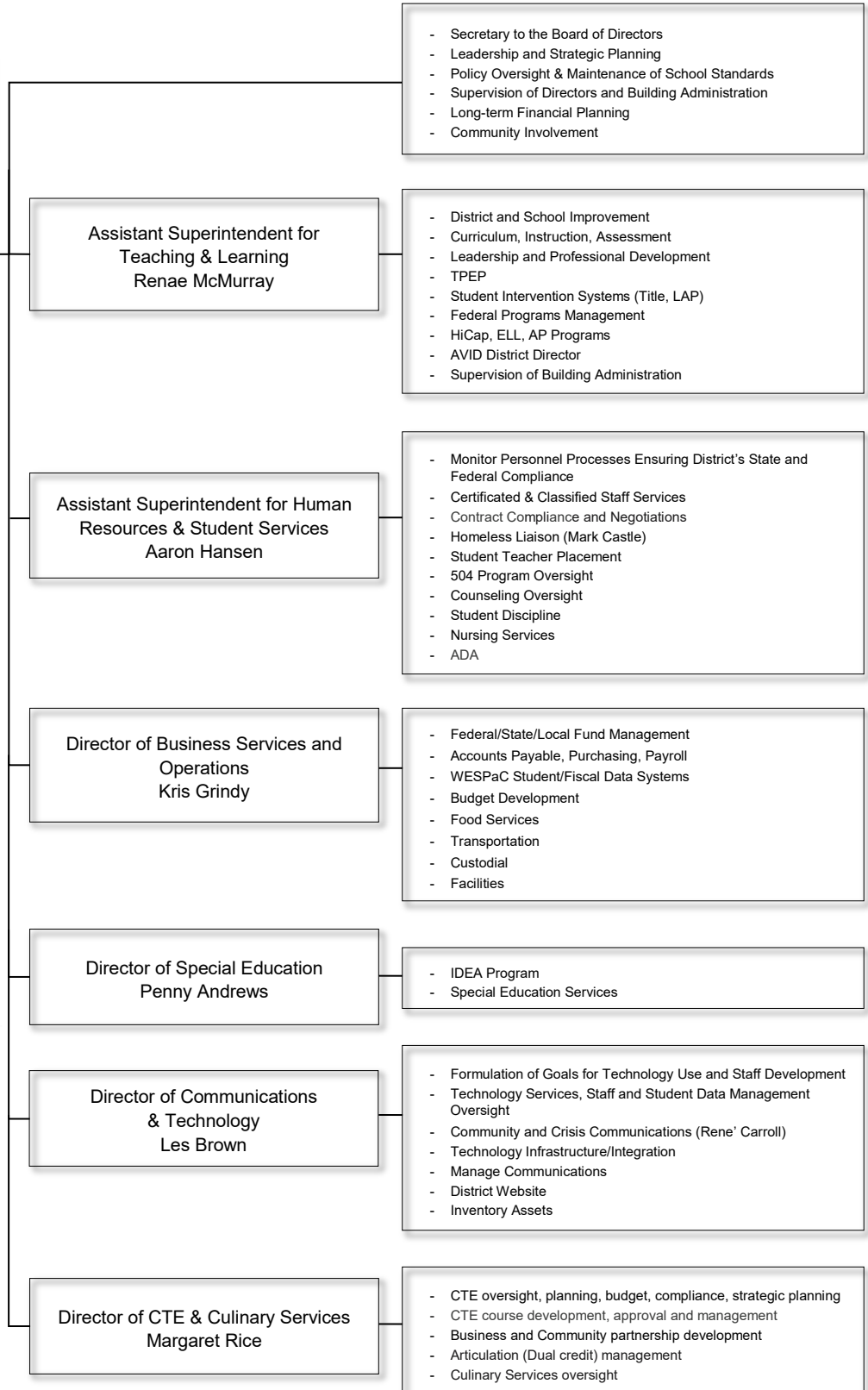
ACCOUNTABILITY

GOVERNANCE

**Washougal School District
Board of Directors**

Superintendent
Dr. Mary Templeton

Legal Services
(Contracted)



- Secretary to the Board of Directors
- Leadership and Strategic Planning
- Policy Oversight & Maintenance of School Standards
- Supervision of Directors and Building Administration
- Long-term Financial Planning
- Community Involvement

Assistant Superintendent for
Teaching & Learning
Renaee McMurray

- District and School Improvement
- Curriculum, Instruction, Assessment
- Leadership and Professional Development
- TPEP
- Student Intervention Systems Title, LAP
- Federal Programs Management
- HiCap, ELL, AP Programs
- AVID District Director
- Supervision of Building Administration

Assistant Superintendent for Human
Resources & Student Services
Aaron Hansen

- Monitor Personnel Processes Ensuring District's State and Federal Compliance
- Certificated & Classified Staff Services
- Contract Compliance and Negotiations
- Homeless Liaison Mark Castle
- Student Teacher Placement
- 504 Program Oversight
- Counseling Oversight
- Student Discipline
- Nursing Services
- ADA

Director of Business Services and
Operations
Kris Grindy

- Federal/State/Local Fund Management
- Accounts Payable, Purchasing, Payroll
- WESPac Student/Fiscal Data Systems
- Budget Development
- Food Services
- Transportation
- Custodial
- Facilities

Director of Special Education
Penny Andrews

- IDEA Program
- Special Education Services

Director of Communications
& Technology
Les Brown

- Formulation of Goals for Technology Use and Staff Development
- Technology Services, Staff and Student Data Management Oversight
- Community and Crisis Communications Rene' Carroll
- Technology Infrastructure/Integration
- Manage Communications
- District Website
- Inventory Assets

Director of CTE & Culinary Services
Margaret Rice

- CTE oversight, planning, budget, compliance, strategic planning
- CTE course development, approval and management
- Business and Community partnership development
- Articulation Dual credit management
- Culinary Services oversight